

## PR204

### MEN'S LONG SLEEVE FITTED POPLIN SHIRT

	CARTON	PACK	TOTAL SKUS
SIZES 14.5" - 17.5"	36	6	56



#### Fabric

65%/35% Polyester/Cotton, Plain Poplin weave. 105gsm

#### Colours

Black, Dark Grey, Light Blue, Purple, Red, Royal, Silver, White

#### Sizes

14½, 15, 15½, 16, 16½, 17, 17½

#### Features

- More fitted shape
- Stiffened formal cut collar
- Separate pocket supplied for attachment if required
- Long sleeves with button fastened cuffs
- Cuffs will also fit cufflinks
- Easy care
- Complements ladies' style PR200 / PR300
- Made from OEKO-TEX® Standard 100 Fabric

#### Country of Origin

Bangladesh

#### Carton Dimensions

36 cm x 57 cm 57 cm

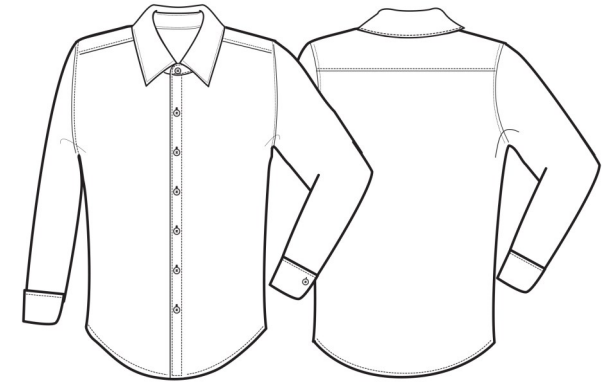
#### Carton Weight

8.35 kg approx.

#### VAT Code

6205 30 0000

Colour	Pantone	C	M	Y	K
Black	Black	0	0	0	100
Dark Grey	431c	11	0	0	65
Light Blue	2708	3	4	9	0
Purple	269	82	98	5	26
Red	200	0	100	65	15
Royal	286	100	60	0	6
Silver	428	10	4	4	14
White	White	0	0	0	0



Collar "	14½	15	15½	16	16½	17	17½
Collar cm	37	38	39½	41	42	43	44½
Chest to fit "	34	36	38	40	42	44	46
Chest to fit cm	86.5	91.5	96.5	101.5	106.5	111.5	116.5
Call size	S	S/M	M	M/L	L	L/XL	XL
Chest actual cm	102	107	112	117	122	127	132
DE,NL	36	38	38-40	40-42	42	44	44-46
FR,ES,PT	36	36-38	38	38-40	40	40-42	42

#### Marketing Description

A men's fitted Poplin shirt that offer a fashionable slim fit style. This shirt comes with an optional chest pocket for attachment if required. A stiff formal cut collar with double buttons to the cuff. Available in our bestselling colours from the Premier 'Colours' collection.



WASH DARK COLOURS SEPARATELY, WASH INSIDE OUT, DO NOT SOAK, DO NOT DRY CLEAN